

INTELLISERVER®

RAS 2000

16, 32, 48, 64 Port Remote Access Connectivity Solution

The IntelliServer® RAS 2000 defines the new standard for advanced intelligent servers. It connects and operates seamlessly within virtually any network environment. It is the "all-in-one" box that eliminates your need to purchase multiple servers. The RAS 2000 simultaneously functions as a remote access server, communications server, terminal server and print server.

For Remote Access connectivity, the RAS 2000 offers an easy to use web browser interface that assures easy installation and configuration. It also reduces administration costs by allowing connectivity to all your networks from a single remote location.

As a communications server, the RAS 2000 is specifically designed for large installations in the Retail/Point-of-Sale (POS), Industrial Automation, Education, Hospitality and Medical Office environments. It supports all standard RS-232 serial devices: terminals, printers, modems, bar code scanners and POS equipment. Each connected serial device can communicate at baud rates of 921.6 Kbps full-duplex.

Expand the RAS 2000 from 16 to 64 ports by simply sliding in additional Rack Expandable (REX) cards. It is available with standard 16 port RS-232 RJ45 connections.

The IntelliServer includes a proprietary lservD utility that allows a UNIX LAN host to access IntelliServer ports as if they were local tty devices. Modem ports can be used for both dial-in and dial-out access, ending the requirement for dedicated inbound and outbound modems. Group resources such as printers and modems can be assigned to shared hunt groups.

The IntelliServer RAS 2000 has an impressive list of security and configuration features. Users can be automatically logged onto a specific host, offered a menu of host connections or given access to IntelliServer's shell. If desired, passwords can be defined for specific users and for administrators. A resident multi-session manager (IntelliView) allows each user to run up to 8 login sessions and toggle between multiple sessions.

The RAS 2000 provides transparent remote access to Ethernet LANs and Internet services. For NT RAS networks, it also provides access to security features such as ssh®, PPP, PAP, CHAP, Data Encryption, RADIUS and IP filtering. It enables network management with event logging and monitoring capabilities.

Product Features:

- Web Browser Interface
- Secure Shell (ssh®) Protocol
- Up to 20 Telnet Connections
- Flash Upgrade Kernel
- IntelliFeatures®
- 921.6 Kbps Data Transfer Speed
- IP Filtering

RAS TECHNICAL SPECIFICATIONS

ARCHITECTURE

MIPS-R3000 processor
PC-100 SDRAM
Eight Megabytes of memory
Flash memory

OPERATION

Firmware: Download and/or flash upgrade
Flow Control: Xon/Xoff and/or RTS/CTS
Temp. Range: 10-40°C
Humidity: 10-90% (non-condensing)
Power: 100-250V, 50/60 Hz; 50W or 48VDC
Signals: Rx/D, Tx/D, RTS, CTS, DCD, DSR, RI, SG
Protection: Surge/spike protection all ports

RAS 2000 HARDWARE

Dimensions: 19" x 13" x 3U"
Connectors: 10-Base T or AUI
Port Type: RJ45, 10-pin standard, RS-232
Speed: Up to 921.6 Kbps
Modules: Maximum four (4) per node
Node: Maximum 64 ports per node

EXPANSION MODULES

Dimensions: 16.75" x 1.0"
Port Type: 16, RJ45, 10-pin standard, RS-232
Speed: Up to 921.6 Kbps
Part Number: REX-16RJ-232

FEATURES

Web Browser Interface
lserVd
IntelliFeatures®
- IntelliPrint transparent printing
- IntelliView® multiple sessions
- IntelliSet® port configuration

Security

ssh®, PAP, CHAP,
RADIUS, IP filtering,

Protocols

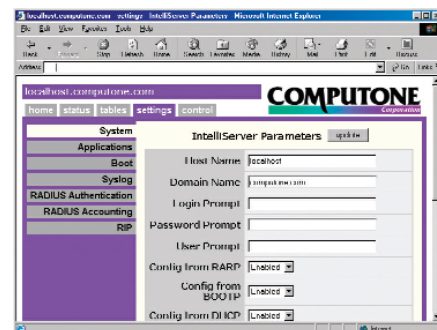
TCP/IP, SNMP, PPP, SLIP,
CSLIP, Telnet, telnetd,
Reverse TCP, RSH, RARP,
TFTP, BOOTP, DHCP, RIPv2

COMPLIANCE

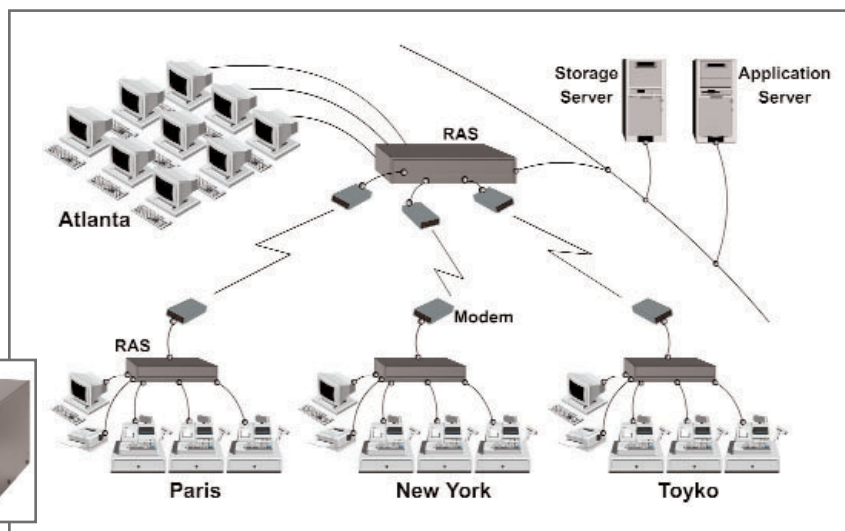
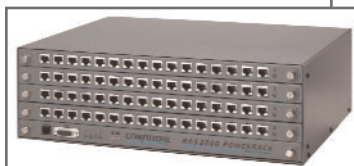
FCC, CE, UL
3-year limited hardware warranty

Figure 1.

The web browser interface assures simple installation and configuration.



RAS 2000



Corporate Headquarters

1867-B McFarland Road
Alpharetta, GA. 30005
T: (770) 569-8611
F: (860) 371-3716
info@alturaxl.com
www.alturaxl.com

©2003 Altura XL LLC. All rights reserved.

Notice: This document is for informational purposes only and does not set forth any warranty, express or implied, concerning any equipment, equipment feature, or service offered or to be offered by Computone. Altura XL reserves the right to make changes to this document at any time, without further notice, and assumes no responsibility for its use. This informational document contains forward-looking statements that may not be accurate and describes features that may not be currently available. Contact an Altura XL sales representative for information on feature and product availability.